



Flight Plan & Site Survey

Created using **RPAS Wilco**®

Operation Name:	Georgetown
Pilot Name:	██████████
Pilot Certificate:	██████████
Flight Start:	January 27, 2023 6:26 PM
Flight End:	January 27, 2023 8:26 PM
Flight Area (Latitude):	43° 38' 5.60" N (43.635)
Flight Area (Longitude):	79° 51' 45.50" W (-79.863)
Altitude - Radius:	Alt: 600 ft - Rad: 926.0 m (0.5 nm)
Airspace:	UNCONTROLLED
FIR - Contact:	CZYZ - 905-676-4509
Weather:	-1.8 Celsius - Snow, Partially cloudy

Please ensure you received all required authorizations prior to flight.

Disclaimer

This Site Survey was created using RPAS Wilco by AIM Robotics. The flight plan contained is intended only for RPAS flights on the date/time and location specified. The user accepts all responsibility for the accuracy and completeness of the information contained.

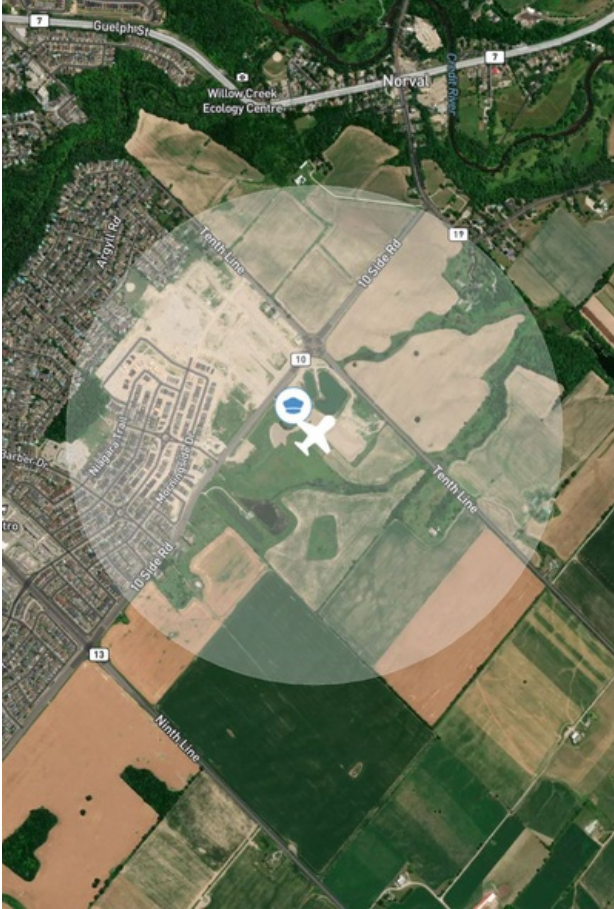
For the complete Terms & Conditions, see

<https://rpswilco.com/#/tnc>



Included

- Site Survey
- Obstacles (if available)
- Nearby Aerodromes
- Canadian Aviation Regulations
- GFA
- Aerodrome Supplements
- METAR & TAF (if available)
- NOTAMS
- CFS

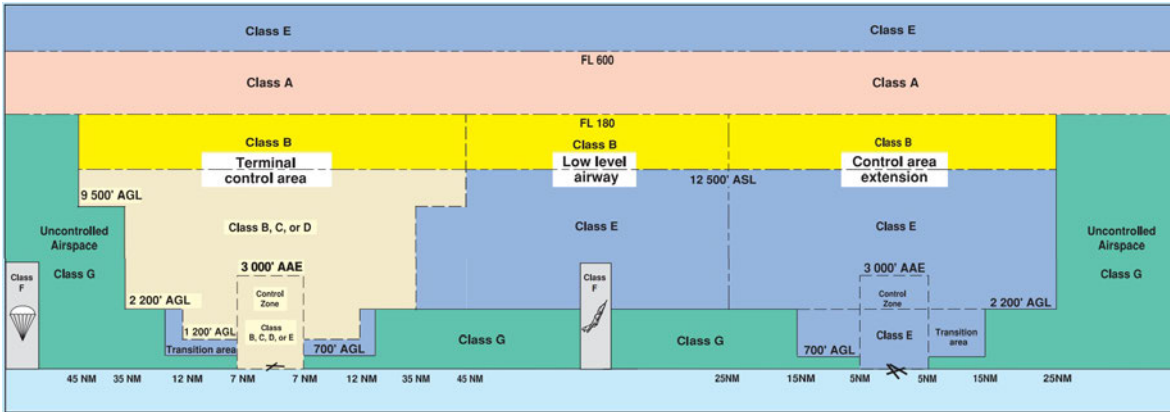
Flight Map



MAP Details

	Latitude	Longitude
 MODEL	43° 38' 5.60" N (43.635)	79° 51' 45.50" W (-79.863)
 Pilot	43° 38' 9.20" N (43.6359)	79° 51' 49.10" W (-79.8636)

Airspace Classification



Overlying Airspaces

Class	Name	Floor	Ceiling
E	Southern Ontario Low Level Control Area CAE	2500MSL	6500MSL
E	Southern Ontario Low Level Control Area CAE	6500MSL	12500MSL
B	Southern Ontario Low Level Control Area CAE	12500MSL	18000MSL
E	Toronto XPNDR MANDTRY	6500MSL	12500MSL
B	Windsor, ON TA	12500MSL	18000MSL
E	Windsor, ON TA	700AGL	12500MSL
C	Toronto, ON TCA	2500MSL	3500MSL
C	Toronto, ON TCA	4500MSL	12500MSL
C	Toronto, ON TCA	3500MSL	4500MSL
C	Toronto, ON TCA	2000MSL	2500MSL
C	Toronto, ON TCA	1700MSL	2000MSL

Nearest Aerodromes & Distance from Operation

GEORGETOWN (GEORGETOWN AND DISTRICT HOSP) (CNZ6 HELIPORT Cert)	Lat: 43.644	Long: 79.934	5.831 KM	3.15 NM
BRAMPTON CALEDON (CNC3 AERODROME Cert)	Lat: 43.76	Long: 79.874	13.942 KM	7.53 NM
MILTON (AFI) (CMH2 HELIPORT Reg)	Lat: 43.532	Long: 79.903	11.894 KM	6.42 NM
MILTON (DISTRICT HOSPITAL) (CPY2 HELIPORT Cert)	Lat: 43.498	Long: 79.868	15.227 KM	8.22 NM

Weather Information for Mission Day

Summary: Partly cloudy throughout the day with early morning snow.

Condition	Temperature	Feels Like	Precipitation	Visibility	Cloud Coverage	Wind Speed	Humidity
Snow, Partially cloudy	1.8 Celsius	6.8 Celsius	100.0 %	13.3 Km	82.4 %	40.3 kph	80.6 %

Canadian Aviation Regulations

Division III — General Operating and Flight Rules

For full listing please visit <https://laws-lois.justice.gc.ca/eng/regulations/SOR-96-433/FullText.html#s-901.27>

Visual Line-of-sight

- **901.11 (1)** Subject to subsection (2) no pilot shall operate a remotely piloted aircraft system unless the pilot or a visual observer has the aircraft in visual line-of-sight at all times during flight.
- **(2)** A pilot may operate a remotely piloted aircraft system without the pilot or a visual observer having the aircraft in visual line-of-sight if the operation is conducted in accordance with a special flight operations certificate — RPAS issued under section 903.03.

Procedures

- **901.23 (1)** No pilot shall operate a remotely piloted aircraft system unless the following procedures are established:
 - **(a)** normal operating procedures, including pre-flight, take-off, launch, approach, landing and recovery procedures; and
 - **(b)** emergency procedures, including with respect to
 - **(i)** a control station failure,
 - **(ii)** an equipment failure,
 - **(iii)** a failure of the remotely piloted aircraft,
 - **(iv)** a loss of the command and control link,
 - **(v)** a fly-away, and
 - **(vi)** flight termination.
- **(2)** If the manufacturer of the remotely piloted aircraft system provides instructions with respect to the topics referred to in paragraphs (1)(a) and (b), the procedures established under subsection (1) shall reflect those instructions.
- **(3)** No pilot shall conduct the take-off or launch of a remotely piloted aircraft unless the procedures referred to in subsection (1) are reviewed before the flight by, and are immediately available to, each crew member.
- **(4)** No pilot shall operate a remotely piloted aircraft system unless the operation is conducted in accordance with the procedures referred to in subsection (1).

Site Survey

901.27 No pilot shall operate a remotely piloted aircraft system unless, before commencing operations, they determine that the site for take-off, launch, landing or recovery is suitable for the proposed operation by conducting a site survey that takes into account the following factors:

- **(a)** the boundaries of the area of operation;
- **(b)** the type of airspace and the applicable regulatory requirements;
- **(c)** the altitudes and routes to be used on the approach to and departure from the area of operation;
- **(d)** the proximity of manned aircraft operations;
- **(e)** the proximity of aerodromes, airports and heliports;
- **(f)** the location and height of obstacles, including wires, masts, buildings, cell phone towers and wind turbines;
- **(g)** the predominant weather and environmental conditions for the area of operation; and
- **(h)** the horizontal distances from persons not involved in the operation.

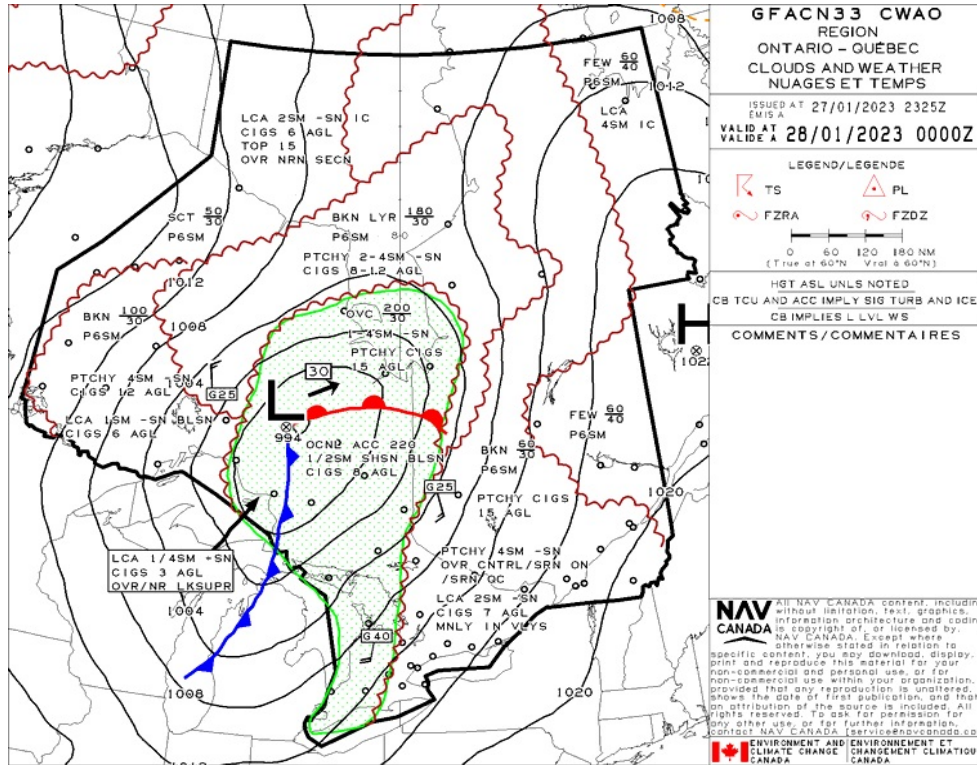
Operations at or in the Vicinity of an Aerodrome, Airport or Heliport

- **901.47 (1)** No pilot shall operate a remotely piloted aircraft at or near an aerodrome that is listed in the *Canada Flight Supplement* or the *Water Aerodrome Supplement* in a manner that could interfere with an aircraft operating in the established traffic pattern.
- **(2)** Subject to section 901.73 no pilot shall operate a remotely piloted aircraft at a distance of less than
 - **(a)** three nautical miles from the centre of an airport; and
 - **(b)** one nautical mile from the centre of a heliport.
- **(3)** No pilot shall operate a remotely piloted aircraft at a distance of less than three nautical miles from the centre of an aerodrome operated under the authority of the Minister of National Defence unless the operation is conducted in accordance with a special flight operations certificate — RPAS issued under section 903.03.

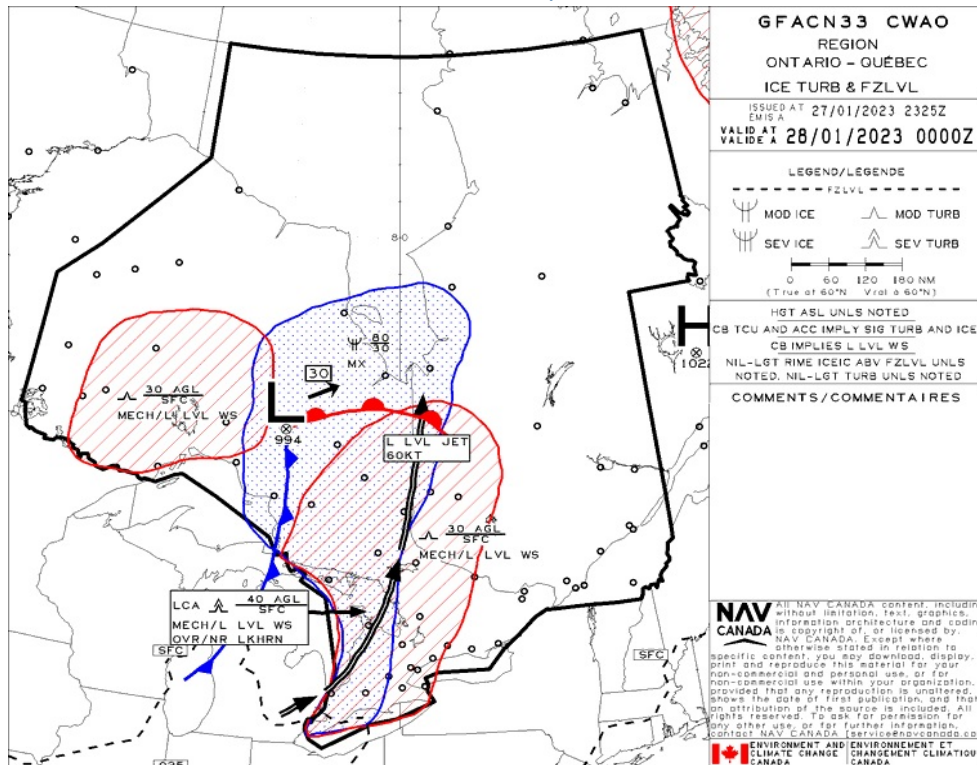
Records

- **901.48 (1)** Every owner of a remotely piloted aircraft system shall keep the following records:
 - **(a)** a record containing the names of the pilots and other crew members who are involved in each flight and, in respect of the system, the time of each flight or series of flights and
 - **(b)** a record containing the particulars of any mandatory action and any other maintenance action, modification or repair performed on the system, including
 - **(i)** the names of the persons who performed them,
 - **(ii)** the dates they were undertaken,
 - **(iii)** in the case of a modification, the manufacturer, model and a description of the part or equipment installed to modify the system, and
 - **(iv)** if applicable any instructions provided to complete the work.
- **(2)** Every owner of a remotely piloted aircraft system shall ensure that the records referred to in subsection (1) are made available to the Minister on request and are retained for a period of
 - **(a)** in the case of the records referred to in paragraph (1)(a), 12 months after the day on which they are created; and
 - **(b)** in the case of the records referred to in paragraph (1)(b), 24 months after the day on which they are created.
- **(3)** Every owner of a remotely piloted aircraft system who transfers ownership of the system to another person shall, at the time of transfer, also deliver to that person all of the records referred to in paragraph (1)(b).

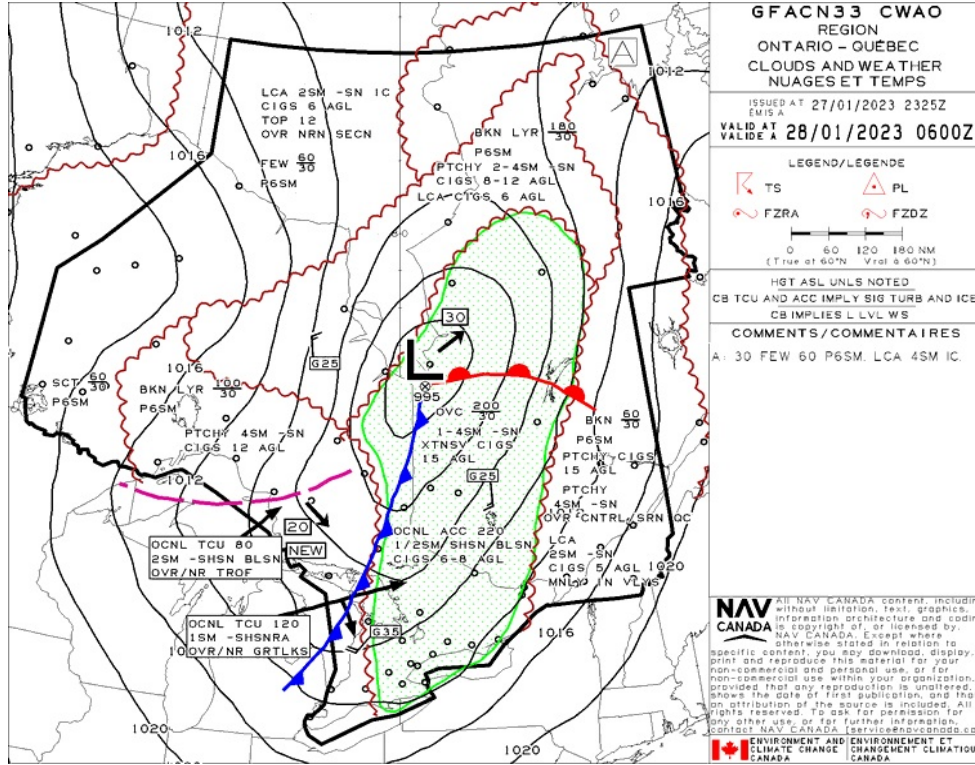
GFA Issue time + 00 hr - CLOUDS AND WEATHER



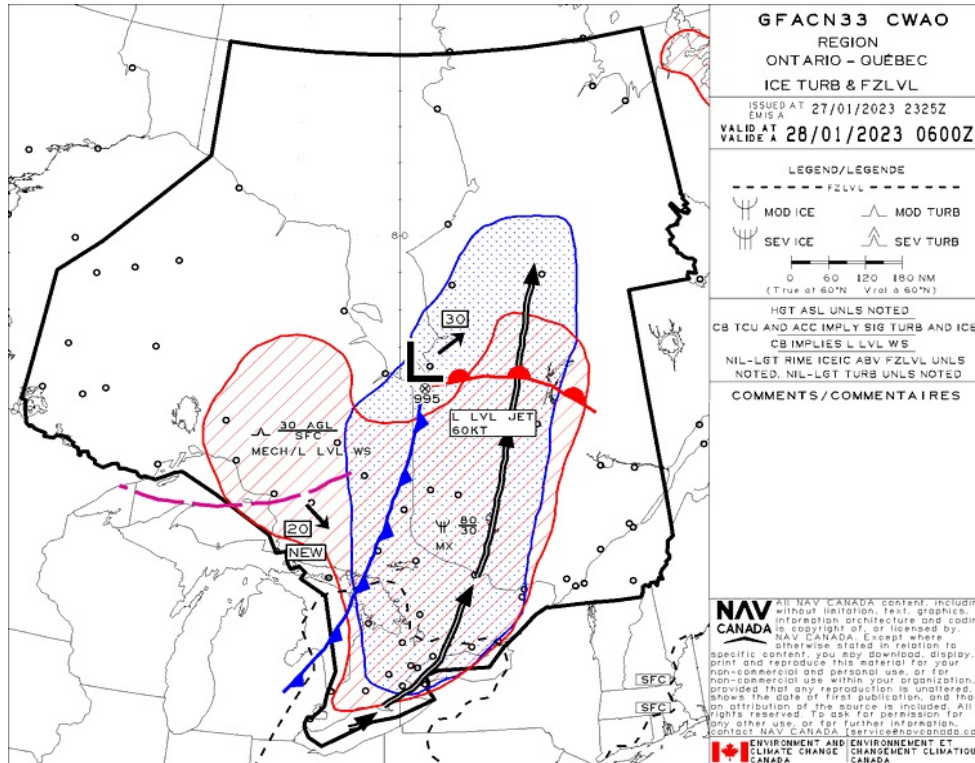
GFA Issue time + 00 hr - TURBULENCE, ICING AND FREEZING LEVEL



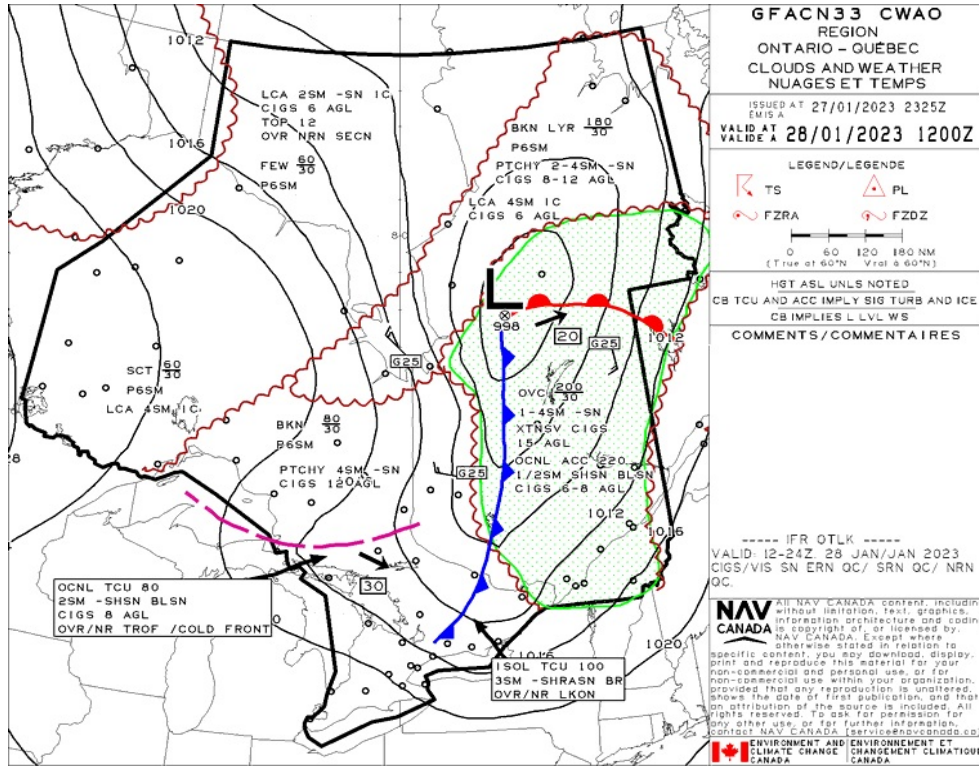
GFA Issue time + 06 hr - CLOUDS AND WEATHER



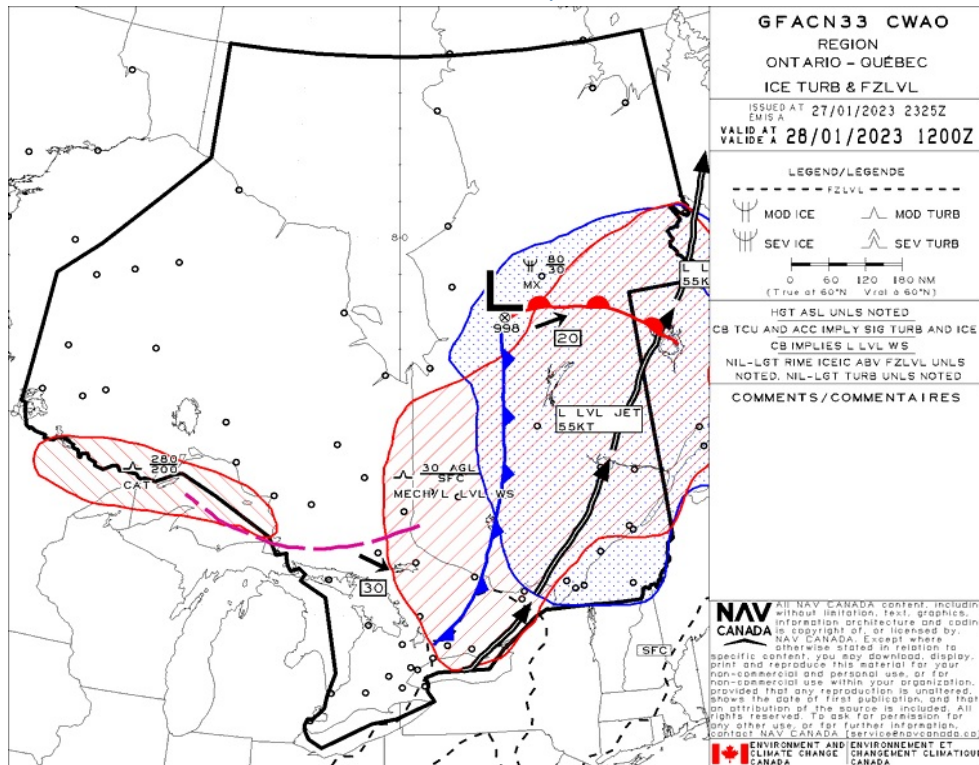
GFA Issue time + 06 hr - TURBULENCE, ICING AND FREEZING LEVEL



GFA Issue time + 12 hr - CLOUDS AND WEATHER



GFA Issue time + 12 hr - TURBULENCE, ICING AND FREEZING LEVEL





GEORGETOWN (GEORGETOWN AND DISTRICT HOSP) - CNZ6 - Cert

NOTAM

(G0033/23 NOTAMR G2417/22
Q) CZXX/QOECH/IV/NBO/E/000/999/5518N09358W999
A) CZWG CZYZ B) 2301111838 C) 2304121800EST
E) A ACFT, REGARDLESS OF THE STATE OF REGISTRY, DIRECTLY OR
INDIRECTLY OWNED, CHARTERED, LEASED, OPERATED OR OTHERWISE
CONTROLLED BY A PERSON CONNECTED WITH EITHER THE RUSSIAN
FEDERATION OR OF BEARUS OR BY A CORPORATION OR ENTITY THAT IS
INCORPORATED OR FORMED UNDER THE LAWS OF THE RUSSIAN FEDERATION
OR BEARUS, AND A OPERATORS HOLDING AN AIR OPERATOR CERTIFICATE
(AOC) ISSUED BY RUSSIAN FEDERATION AND/OR BEARUSIAN AUTHORITIES
ARE PROHIBITED TO ENTER, EXIT OR OVERFLY CANADA'S TERRITORIAL
AIRSPACE (INCLUDING FURTHER WITHIN 12NM OF CANADA'S COASTS).
EXCEPTIONS PERMITTED FOR ACFT EXPERIENCING INFLIGHT EMERG.

A AUTH OBTAINED PRIOR TO 27 FEB 2022 FOR ACFT AND OPS SUBJECT
TO THIS NOTAM ARE REVOKED.

HUMANITARIAN, SAR, MEDEVAC AND ANY OTHER FURTHER SEEKING AN EXCEPTION
TO THIS RESTRICTION MUST RECEIVE AUTH GRANTED AFTER 27 FEB 2022
FROM THE MINISTER OF TRANSPORT TO OPERATE IN CANADA'S TERRITORIAL
AIRSPACE. AFFECTED ACFT WISHING TO OBTAIN SUCH AN AUTH OR RETURN
INTO CANADA'S TERRITORIAL AIRSPACE MAY APPLY TO THE MINISTER OF
TRANSPORT AT 1-877-992-6853 OR 1-613-992-6853 OR BY EMAIL AT
OPERATIONS.AVIATION(AT)TC.GC.CA.)



BRAMPTON-CALEDON - CNC3 - Cert

NOTAM

(G0033/23 NOTAMR G2417/22
Q) CZXX/QOECH/IV/NBO/E/000/999/5518N09358W999
A) CZWG CZYZ B) 2301111838 C) 2304121800EST
E) A ACFT, REGARD ESS OF THE STATE OF REGISTRY, DIRECT Y OR
INDIRECT Y OWNED, CHARTERED, EASED, OPERATED OR OTHERWISE
CONTRO ED BY A PERSON CONNECTED WITH EITHER THE RUSSIAN
FEDERATION OR OF BE ARUS OR BY A CORPORATION OR ENTITY THAT IS
INCORPORATED OR FORMED UNDER THE AWS OF THE RUSSIAN FEDERATION
OR BE ARUS, AND A OPERATORS HO DING AN AIR OPERATOR CERTIFICATE
(AOC) ISSUED BY RUSSIAN FEDERATION AND/OR BE ARUSIAN AUTHORITIES
ARE PROHIBITED TO ENTER, EXIT OR OVERF Y CANADA'S TERRITORIA
AIRSPACE (INC UDING F T WITHIN 12NM OF CANADA'S COASTS).
EXCEPTIONS PERMITTED FOR ACFT EXPERIENCING INF IGH T EMERG.

A AUTH OBTAINED PRIOR TO 27 FEB 2022 FOR ACFT AND OPS SUBJECT
TO THIS NOTAM ARE REVOKED.

HUMANITARIAN, SAR, MEDEVAC AND ANY OTHER F T SEEKING AN EXCEPTION
TO THIS RESTRICTION MUST RECEIVE AUTH GRANTED AFTER 27 FEB 2022
FM THE MINISTER OF TRANSPORT TO OPERATE IN CANADA'S TERRITORIA
AIRSPACE. AFFECTED ACFT WISHING TO OBTAIN SUCH AN AUTH OR C R
INTO CANADA'S TERRITORIA AIRSPACE MAY APP Y TO THE MINISTER OF
TRANSPORT AT 1-877-992-6853 OR 1-613-992-6853 OR BY EMAI AT
OPERATIONS.AVIATION(AT)TC.GC.CA.)

(U0038/23 NOTAMR U1502/22
Q) CZYZ/QO AS/IV/M/AE/000/011/4345N07952W005
A) CXXX B) 2301060558 C) 2303031700
E) CNC3 BRAMPTON-CA EDON
OBST GT U/S TOWER 434439N 0795153W (APRX 1.02NM SSE AD) 172FT
AG , 1056FT AMS .)



MILTON (AFI) - CMH2 - Reg

NOTAM

(G0033/23 NOTAMR G2417/22
Q) CZXX/QOECH/IV/NBO/E/000/999/5518N09358W999
A) CZWG CZYZ B) 2301111838 C) 2304121800EST
E) A ACFT, REGARDLESS OF THE STATE OF REGISTRY, DIRECTLY OR
INDIRECTLY OWNED, CHARTERED, LEASED, OPERATED OR OTHERWISE
CONTROLLED BY A PERSON CONNECTED WITH EITHER THE RUSSIAN
FEDERATION OR OF BEARUS OR BY A CORPORATION OR ENTITY THAT IS
INCORPORATED OR FORMED UNDER THE LAWS OF THE RUSSIAN FEDERATION
OR BEARUS, AND A OPERATORS HOLDING AN AIR OPERATOR CERTIFICATE
(AOC) ISSUED BY RUSSIAN FEDERATION AND/OR BEARUSIAN AUTHORITIES
ARE PROHIBITED TO ENTER, EXIT OR OVERFLY CANADA'S TERRITORIAL
AIRSPACE (INCLUDING FT WITHIN 12NM OF CANADA'S COASTS).
EXCEPTIONS PERMITTED FOR ACFT EXPERIENCING INFLIGHT EMERG.

A AUTH OBTAINED PRIOR TO 27 FEB 2022 FOR ACFT AND OPS SUBJECT
TO THIS NOTAM ARE REVOKED.

HUMANITARIAN, SAR, MEDEVAC AND ANY OTHER FT SEEKING AN EXCEPTION
TO THIS RESTRICTION MUST RECEIVE AUTH GRANTED AFTER 27 FEB 2022
FM THE MINISTER OF TRANSPORT TO OPERATE IN CANADA'S TERRITORIAL
AIRSPACE. AFFECTED ACFT WISHING TO OBTAIN SUCH AN AUTH OR CLR
INTO CANADA'S TERRITORIAL AIRSPACE MAY APPLY TO THE MINISTER OF
TRANSPORT AT 1-877-992-6853 OR 1-613-992-6853 OR BY EMAIL AT
OPERATIONS.AVIATION(AT)TC.GC.CA.)

(U1611/22 NOTAMR U1610/22
Q) CZYZ/QO AS/IV/M/AE/000/014/4335N07949W005
A) CXXX B) 2211301216 C) 2302282100EST
E) CMH2 MILTON (AFI) (HE I)
OBST GT U/S TOWER 433432N 0794903W (APRX 4.5NM ENE AD) 647FT
AGL, 1326FT AMS .)



MILTON (DISTRICT HOSPITAL) - CPY2 - Cert

NOTAM

(G0033/23 NOTAMR G2417/22
Q) CZXX/QOEC/IV/NBO/E/000/999/5518N09358W999
A) CZWG CZYZ B) 2301111838 C) 2304121800EST
E) A ACFT, REGARDLESS OF THE STATE OF REGISTRY, DIRECTLY OR
INDIRECTLY OWNED, CHARTERED, LEASED, OPERATED OR OTHERWISE
CONTROLLED BY A PERSON CONNECTED WITH EITHER THE RUSSIAN
FEDERATION OR OF BEARUS OR BY A CORPORATION OR ENTITY THAT IS
INCORPORATED OR FORMED UNDER THE LAWS OF THE RUSSIAN FEDERATION
OR BEARUS, AND A OPERATORS HOLDING AN AIR OPERATOR CERTIFICATE
(AOC) ISSUED BY RUSSIAN FEDERATION AND/OR BEARUSIAN AUTHORITIES
ARE PROHIBITED TO ENTER, EXIT OR OVERFLY CANADA'S TERRITORIAL
AIRSPACE (INCLUDING FURTHER WITHIN 12NM OF CANADA'S COASTS).
EXCEPTIONS PERMITTED FOR ACFT EXPERIENCING IMMEDIATE EMERGENCY.

A AUTHORITY OBTAINED PRIOR TO 27 FEB 2022 FOR ACFT AND OPS SUBJECT
TO THIS NOTAM ARE REVOKED.

HUMANITARIAN, SAR, MEDEVAC AND ANY OTHER FURTHER SEEKING AN EXCEPTION
TO THIS RESTRICTION MUST RECEIVE AUTHORITY GRANTED AFTER 27 FEB 2022
FROM THE MINISTER OF TRANSPORT TO OPERATE IN CANADA'S TERRITORIAL
AIRSPACE. AFFECTED ACFT WISHING TO OBTAIN SUCH AN AUTHORITY OR RETURN
INTO CANADA'S TERRITORIAL AIRSPACE MAY APPLY TO THE MINISTER OF
TRANSPORT AT 1-877-992-6853 OR 1-613-992-6853 OR BY EMAIL AT
OPERATIONS.AVIATION(AT)TC.GC.CA.)

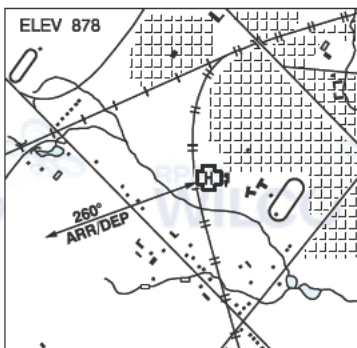
ONTARIO

AERODROME/FACILITY DIRECTORY

GEORGETOWN (GEORGETOWN & DISTRICT HOSP) ON (Heli)

CNZ6

REF	N43 38 40 W79 56 04 Adj SW 10°W UTC-5(4) Elev 878' VTA A5000
OPR	Georgetown & District Hosp 905-873-0111 Cert PPR
FLT PLN	
FIC	London 866-WXBRIEF (Toll free within Canada) or 866-541-4104 (Toll free within Canada & USA)
HELI DATA	FATO/TLOF 83' x 83' ASPH Safety Area 114' x 114' Max heli overall length 55.3'
RCR	Opr
LIGHTING	DR RY(LO) LED green RF(FL)
PRO	Arr/dep 260° fr heli, slope 12% (H2).

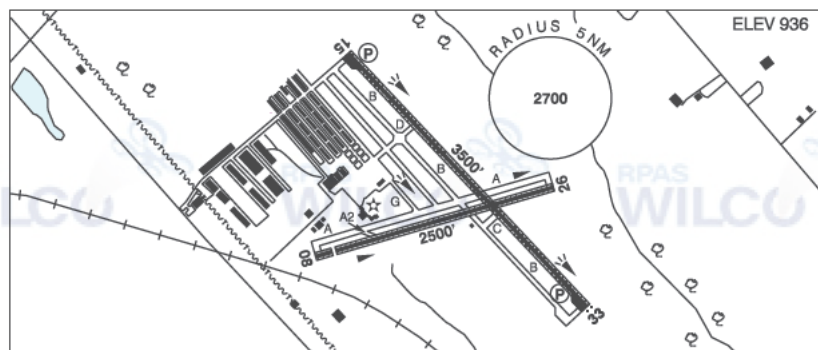


ONTARIO

AERODROME/FACILITY DIRECTORY

BRAMPTON-CALEDON ON

CN3



REF	N43 45 35 W79 52 26 10°W UTC-5(4) Elev 936' VTA A5000 LO6 T2 CAP
OPR	Brampton Flying 905-838-1400 Cert Opr ltd hrs
PF	B-1,2 C-3,4,5,6
CUST	AOE/CAN
FLT PLN	<p>FIG London 866-WXBRIEF (Toll free within Canada) or 866-541-4104 (Toll free within Canada & USA)</p> <p>ACC Toronto 905-676-4590/4591/4592 or 888-217-1241</p> <p>WX WxCam</p> <p>DUAT Flying Club</p>
SERVICES	<p>FUEL 100LL</p> <p>OIL All</p> <p>S 1,2,3,4,5,6</p>
RWY DATA	Rwy 15(146°)/33(326°) 3500x75 asphalt/turf, centre 40' asphalt
RWY CERT	Rwy 08(081°)/26(261°) 2500x75 asphalt/turf, centre 40' asphalt Thld 08 displ 191'
RCR	Rwy 15/33 AGN I Rwy 08/26 AGN I Opr Rwy's rstd to acft 12,500 lbs and under. Ltd win maint
LIGHTING	08-(TE ME), 15-(TE HI) AP, 26-(TE ME), 33-AS(TE HI) AP ARCAL-123.3 type K Win PN
COMM	ATF UNICOM ltd hrs O/T ftc 123.3 5NM up to 2500 ASL excluding hat portion which penetrates Toronto class C Airspace
PRO	Call opr prior to ARCAL ops when win wx might affect rwy cond. Due to close proximity to Toronto/Lester B. Pearson Intl., there may be periods when ATC will be unable to approve use of the inst apch pro. Helicopters arr/dep via active rwy then taxi to/fr designated helicopter area btwn Golf & Bravo at Alpha. Acft with main gear track 18' and over use Rwy 15/33 then turn around bay and backtrack to twy D and apron.
CAUTION	Painted & lgtd twr 1696 ASL (400 AGL) aprx 4NM WNW. Narrow twys (18') exc twy D (24').

ONTARIO

AERODROME/FACILITY DIRECTORY

MILTON (AFI) ON (Heli)

CMH2

REF	N43 31 56 W79 54 10 Adj N 10°W UTC-5(4) Elev 687' VTA A5000	
OPR	AFI Group International Inc 905-693-0746 Reg PN	
PF	A-1 B-2,3,4,5	
FLT PLN FIC	London 866-WXBRIEF (Toll free within Canada) or 866-541-4104 (Toll free within Canada & USA)	
HELI DATA RCR	60' x 60' CONC 80' x 80' rstd max length 40' Opr	
LIGHTING	RY(LO)	
COMM VFR ADV	Toronto 119.3	
PRO	Arr/dep btwn 210°-270° fr heli.	
CAUTION	Numerous twr within 5NM.	

ONTARIO

AERODROME / FACILITY DIRECTORY

MILTON (DISTRICT HOSP) ON (Heli)

CPY2

REF	N43 29 55 W79 52 04 Adj S 10°W (2016) UTC-5(4) Elev 663' VTA A5000	
OPR	Halton Health Care 905-845-2571 Cert PPR	
FLT PLN		
FIC	London 866-WXBRIEF (Toll free within Canada) or 866-541-4104 (Toll free within Canada & USA)	
HELI DATA	FATO 85' dia ASPH TLOF 33' dia CONC Safety Area 115' dia Max heli overall length 57.4'	
RCR	Opr	
LIGHTING	RY(LO) green RF(FL)	
PRO	Arr/dep 045°-135° fr heli, slope 16% (H2), day/night use VFR only.	
CAUTION	Hosp bldg SW of heli.	